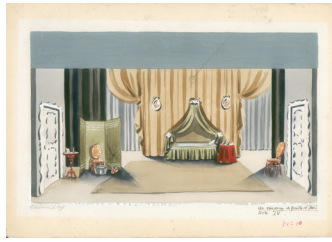


# Greeting Card Set

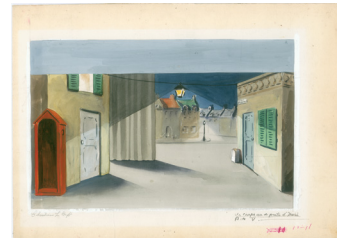
10 cards | Blank | Envelopes included



"Sans titre"



Un chapeau de paille d'Italie  
Acte IV



Un chapeau de paille d'Italie  
Acte V



"Virginie"



"La Baronne"



"Fadinard"



"Vezinet"



"Clara"



"Émile"



"Beauperrhuis"

Series of watercolor painted drawings representing characters of past plays presented at Théâtre Cercle Molière. This series includes pieces by Christiane Le Goff and Pauline Boutal. The characters depicted were included in shows created between 1926 and 1962.

Pauline Boutal : Artistic Director for Théâtre Cercle Molière from 1941 to 1968.  
Christiane Le Goff : Sister of Pauline Boutal, actress, director, costume designer, mask curator, props master and decorator for TCM.



340, Provencher Blvd  
Winnipeg, Manitoba R2H 0G7  
204.233.8053 | info@cerclemoliere.com | cerclemoliere.com